

# Burlington Ontario Health Team Governance Model

Burlington Community Physician Council Annual Meeting

September 15<sup>th</sup>, 2022

---

# Agenda

1. Introductions
2. Integrated Care: From Current to Future State
3. Burlington OHT Mission and Guiding Principles
4. Role of Physicians
5. Key Takeaways and Feedback

# Introductions

With you today from EY:



**Anand Shah**

Partner  
National Health Care Practice

Anand leads the EY healthcare sustainability solution. Anand brings more than 20 years of direct experience in leadership roles within the UK NHS, and central to numerous integrated care and health system transformation projects over his 10+ year career with EY.



**Chris Burgh**

Associate Partner  
National Health Care Practice

Chris has over 20 years of healthcare experience having come from industry into professional services. Chris has worked within healthcare organizations across the UK, Canada, US and Middle East and developed proprietary expertise in performance improvement, clinical and non-clinical service reconfiguration and cost analytics.



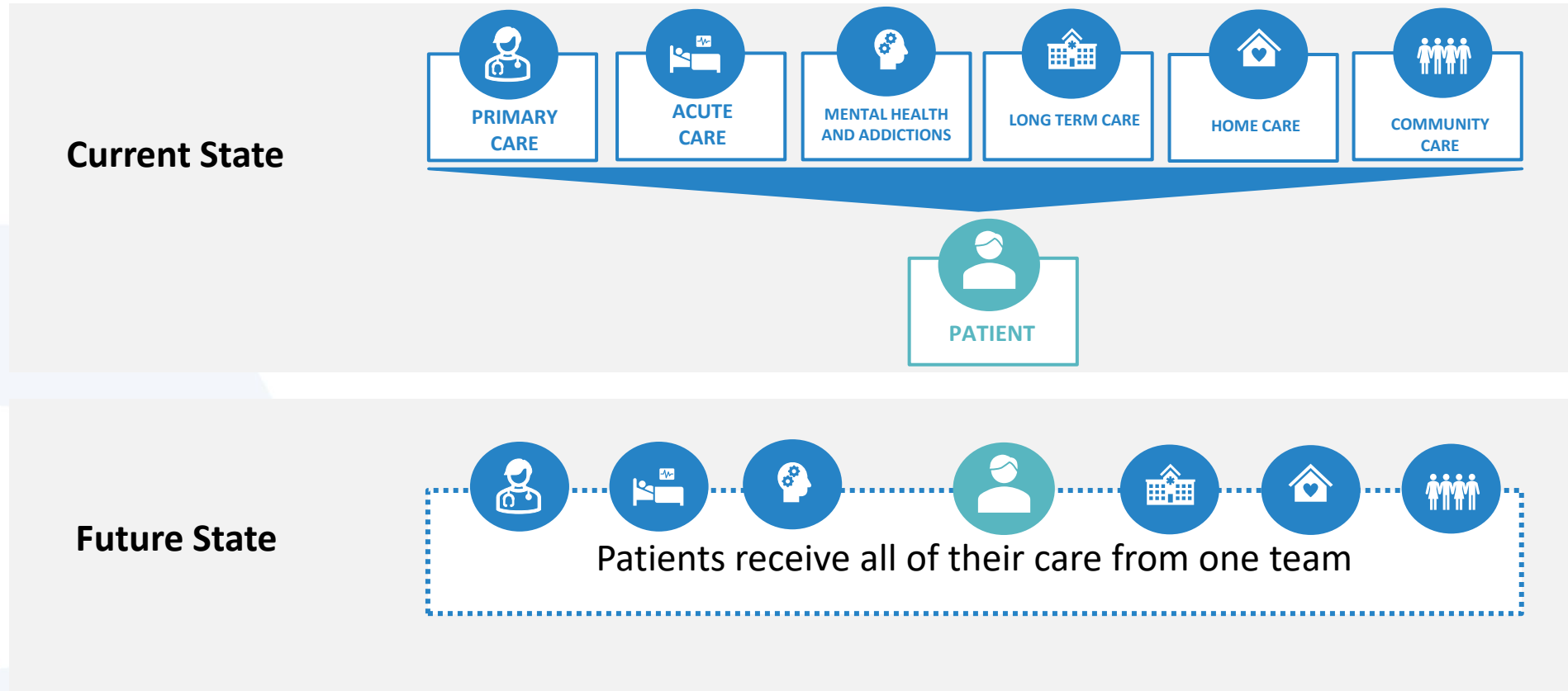
**Julia Pelz**

Senior Consultant  
National Health Care Practice

Julia has over 8 years of healthcare and pharmaceutical experience, specializing in healthcare R&D, biologics drug development, clinical and commercial strategy. Julia has 5+ years of pharmaceutical experience, and a Master of Science in cell and systems biology, where she specialized in genetic engineering, and bioinformatics

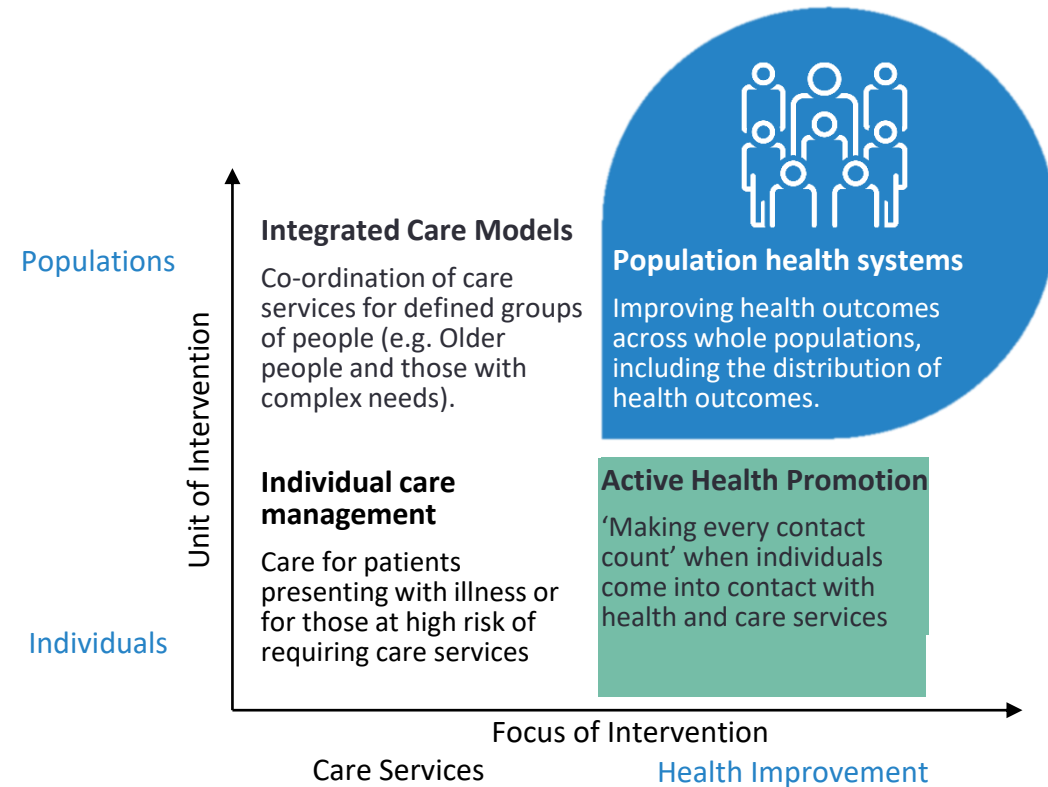
# Ministry of Health Vision

From Current to Future State



# Moving towards an integrated care system

- Integrated care focuses on coordinating services around individuals or around defined groups of people, and will be a part of the broader focus on prevention of ill health across populations.
- Health care providers and practitioners play an essential role in developing integrated care approaches for their local populations, and providing a continuous continuum of care reducing the patient and family's need to navigate a complex system.
- Ontario is taking measured steps to move towards an integrated public health care system, and physicians play an essential role in building a strong foundation for the future.



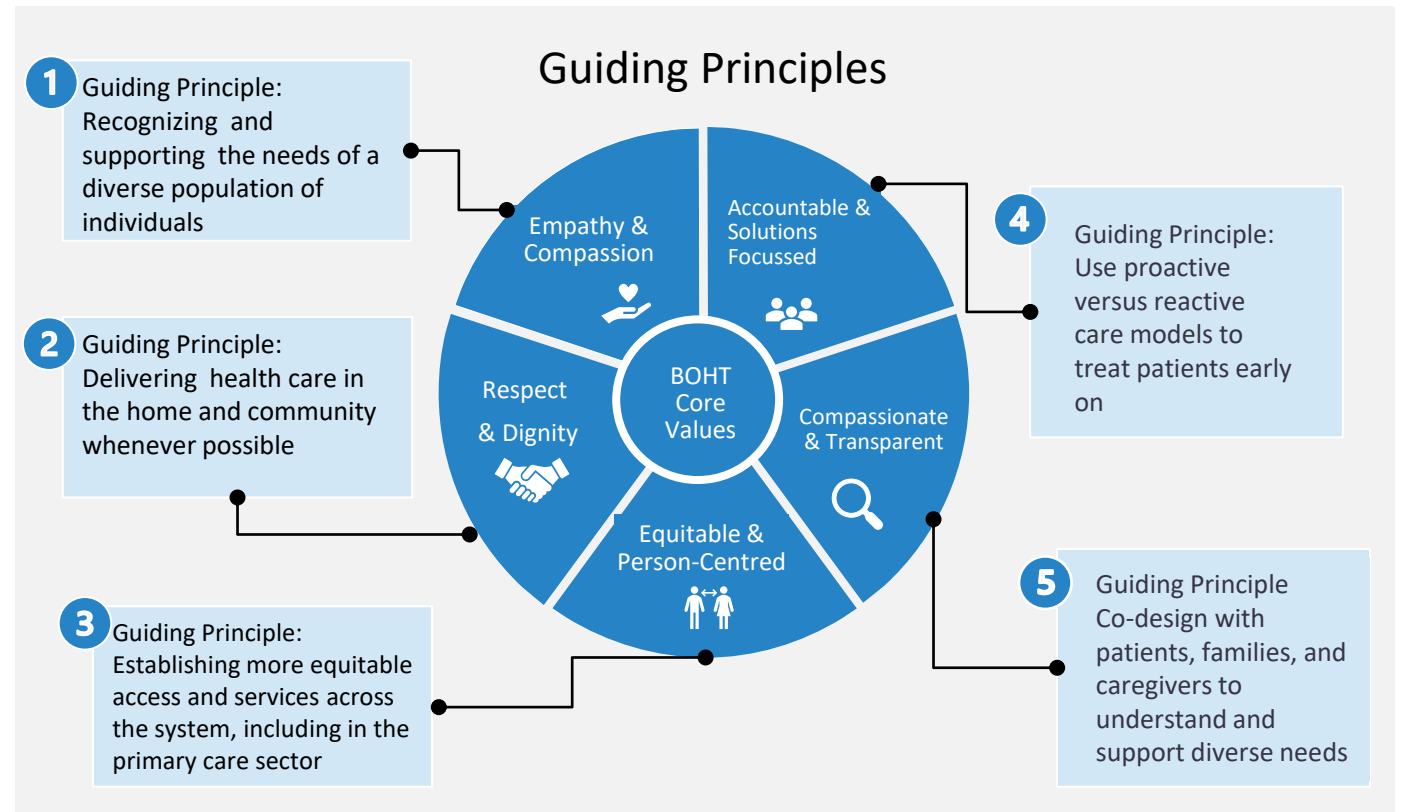
# Mission and Guiding Principles

**“ Our vision is to co-create, with the community, a primary care-focused system of care that connects health, community and social supports around patients, families and caregivers.**

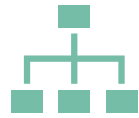
- BOHT Mission Statement

Burlington OHT (BOHT) is a patient-centric community built on a foundation of guiding principles, and embodies a culture of integrity at its core.

Physicians are an essential component of BOHT, and critical for successful implementation of strategic pillars across the health care continuum.



# What we heard from our physician leaders



## Governance

- The original model is a collaborative leadership structure that provides a seat for each physician or group signed on.
- Currently, the BOHT membership consists of 11 organizations including 2 FHOs and 1 FHG.



## Funding

- Most physician practice models do not provide administrative funds to support local design and development.
- Physicians are unable to participate in a cost-sharing model.



## Risk and Liability

- Current insurance programs do not cover indemnification of individual physician members of the BOHT to provide oversight and share accountability of the BOHT initiatives.



## Clinical Leadership

- Physicians are interested in providing clinical leadership in the co-design of new programs and services that will benefit their patients and practice.

# Co-designing a governance framework with physicians

There is an opportunity to create a primary care focused healthcare system and build resources and supports around primary care and their patients.

**How can we do this:**



## Collaborative Decision Making

Bring champions from different tables, and to incorporate a strong physician voice.



## Primary Care Focus

Create a primary care focused healthcare system and build resources and supports around physicians and their patients



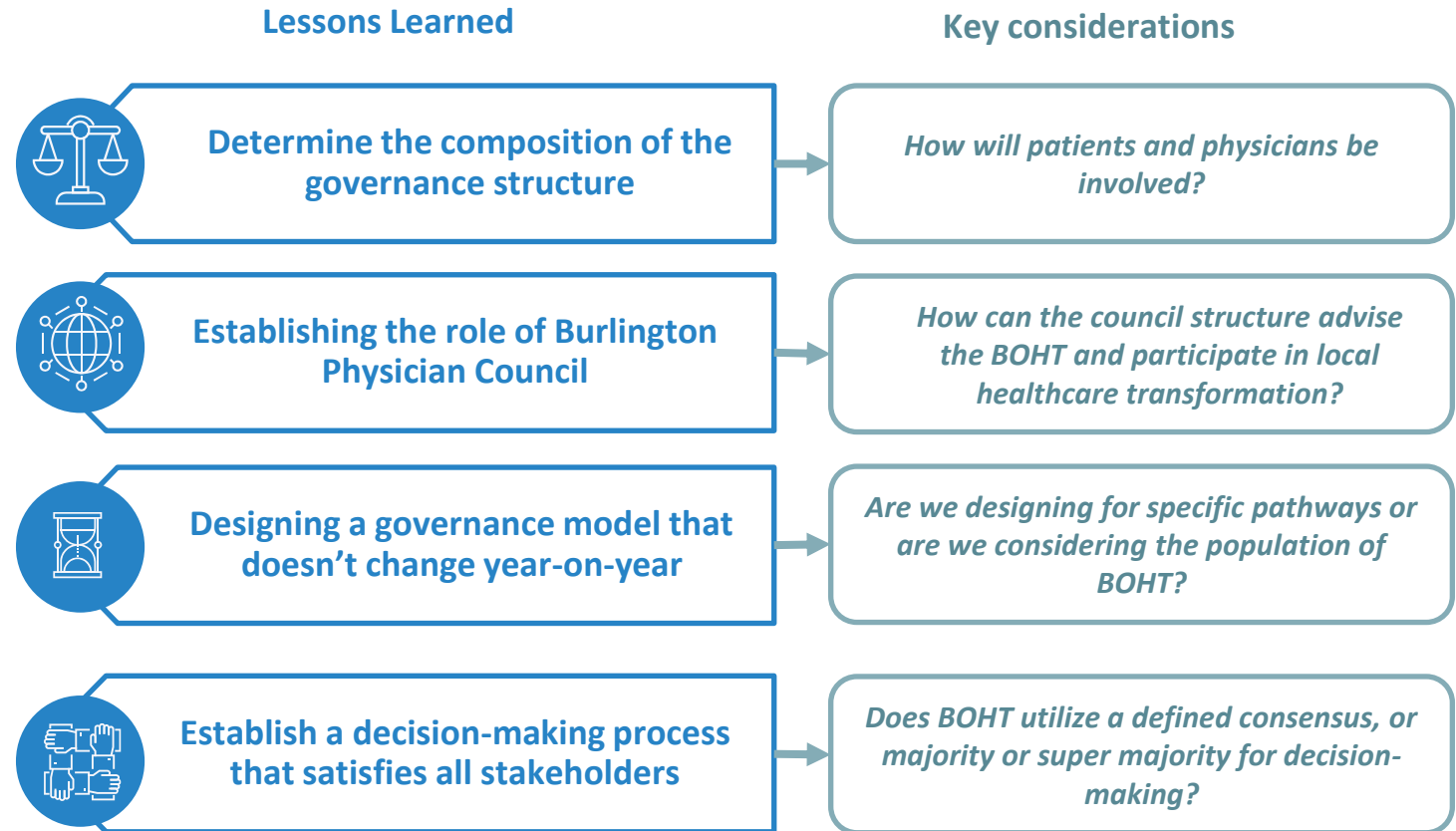
## Clinical Leadership

Keeping physicians at the forefront, and foster a strong physician voice



# Burlington OHT

- The governance structure of your OHT is foundational to achieving a vertically integrated, responsive, coordinated health system, with patients at center.
- Physicians play a critical role in shaping the strategic direction, establishing shared future clinical priorities, and co-designing a governance framework with common vision, mission, and goals.




# Key Takeaways

- 1 Integrated care focuses on coordinating a continuum of services around individuals or around defined groups of people
- 2 Physicians play an essential role in building an integrated care system that will improve the health of the population
- 3 BOHT believes in co-creating a primary care focused system enabled by collaborative decision-making and Clinical Leadership


### Activity

Provide your input by using the sticky notes on the table, or feel free to voice your thoughts



#### Planning and designing local healthcare change

1. What is most important to you?
2. What is the biggest challenge you are facing?



#### Governance

1. What role do you see the Burlington Community Physician Council having in the new BOHT governance model?
2. What should we consider in the new governance model?